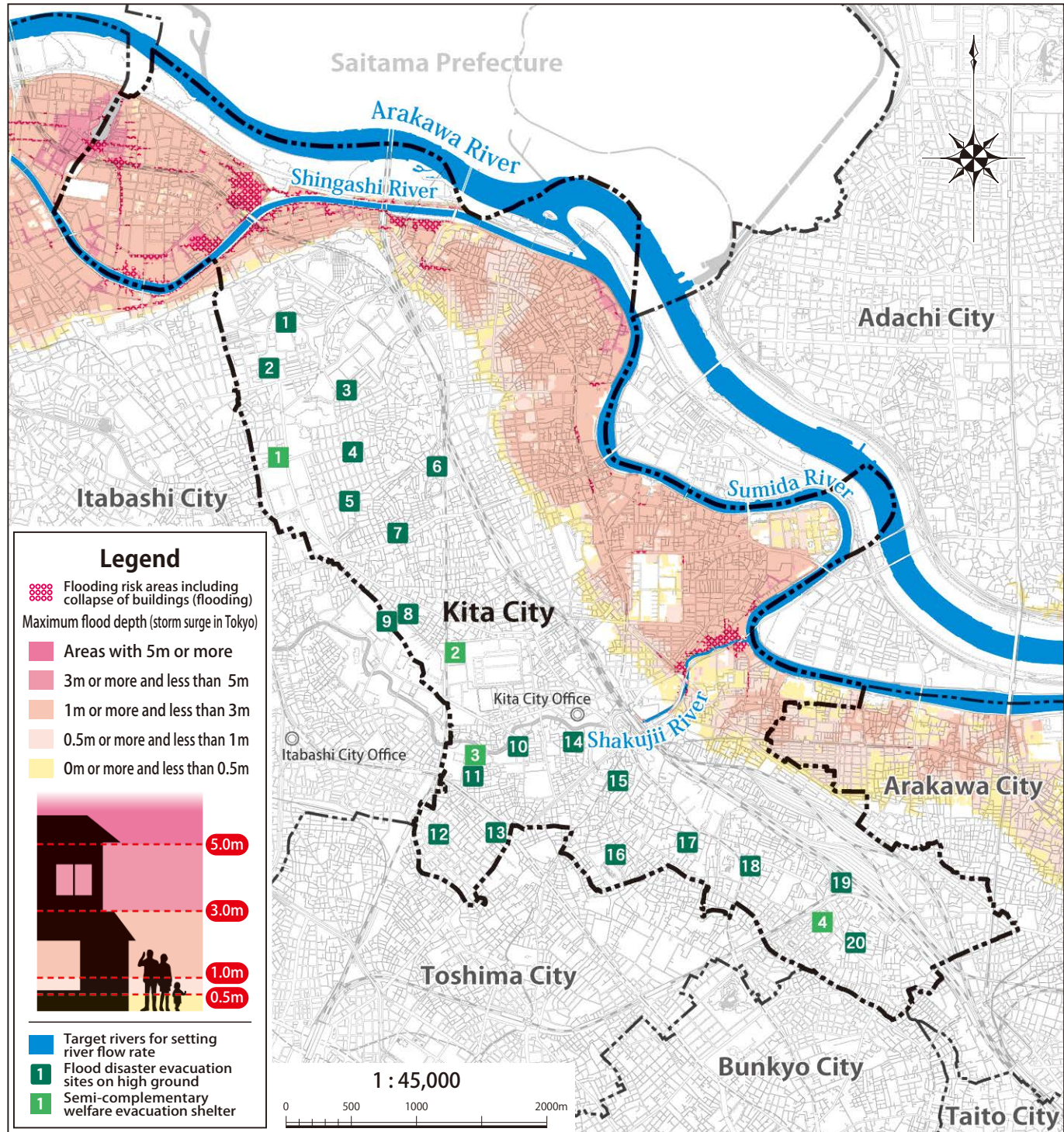


Storm Surge Hazard Map

Storm Surge Hazard Map (flood depth)

This map is a secondary use of a map that was compiled and processed using basic map information with the approval by the Director-General of the Geospatial Information Authority of Japan.



This map shows the flood risk areas, flood depth, duration of inundation, evacuation sites, etc. in the case of river flooding due to the effects of storm surge along the Tokyo Bay coast (Tokyo section). It reflects the map of the storm surge flood risk areas (Tokyo) associated with the assumed maximum storm surge specified by the Flood Control Act.

In the event of a large typhoon approaching with storm surge expected, as a general rule, take the same evacuation behaviors as those during a predicted flooding of the Arakawa River. In addition, begin taking action early, before the weather worsens, to ensure safe evacuation.

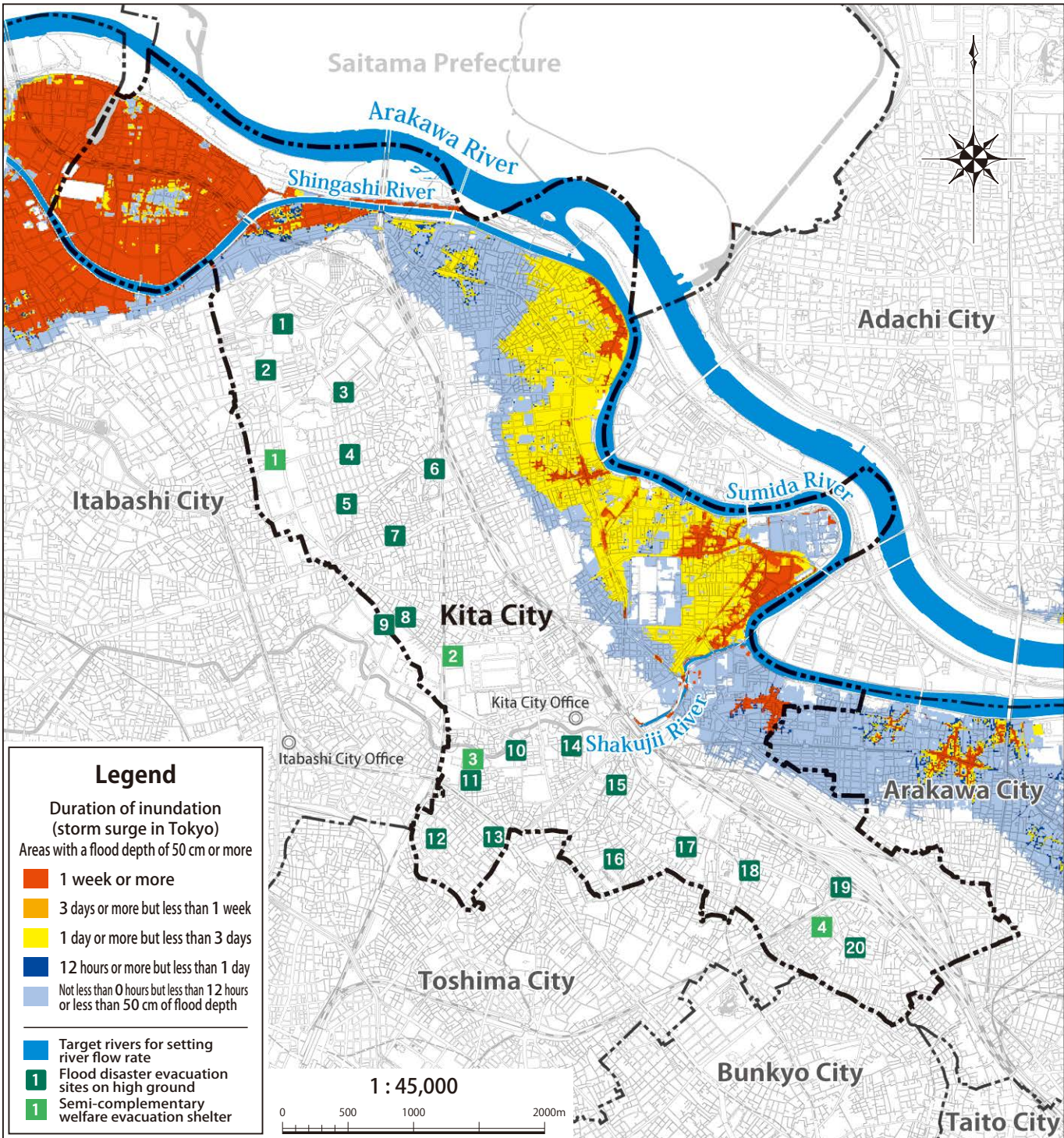
*See page 5 for storm surge, and page 8 for the evacuation behaviors during a predicted flooding of the Arakawa River.

Evacuation behaviors in the flood risk areas

Areas, etc.	Evacuation behaviors
Flooding risk areas including collapse of buildings	[Early evacuation is necessary] There is a possibility of severe flooding that could cause general buildings to collapse.
Areas where walking is impossible (0.5 m or more)	[Early evacuation is necessary] Flooding depths of 0.5 meters or more, rendering walking impossible, will continue for an extended period (two weeks or more in some areas).
Other flood risk areas (less than 0.5 m)	Since flood damage of inundation below the floor level is expected, consider evacuating to safe high ground.

Storm Surge Hazard Map (inundation duration time)

This map is a secondary use of a map that was compiled and processed using basic map information with the approval by the Director-General of the Geospatial Information Authority of Japan.



[Flood disaster evacuation sites on high ground]

No.	Facility name	Location
1	Kirigaoka J.H. School	2-6-11 Kirigaoka
2	Kirigaokasato Elem. Sch.	1-10-23 Kirigaoka
3	Akabanedai Nishi Elem. Sch.	2-1-34 Akabanedai
4	Nishigaoka Elem. Sch.	1-12-14 Nishigaoka
5	Umenoki Elem. Sch.	2-21-15 Nishigaoka
6	Former Shimizu Elem. Sch.	4-5-17 Jujo-nakahara
7	Oji Daisan Elem. Sch.	5-2-3 Kami-jujo
8	Oji Daigo Elem. Sch.	2-18-17 Kami-jujo
9	Former Fujimi J.H. Sch.	3-1-25 Kami-jujo
10	Takinogawa Moniji Elem. Sch.	3-72-1 Takinogawa

No.	Facility name	Location
11	International French School in Tokyo Annex	5-44-15 Takinogawa
12	Yabata Elem. School	7-12-17 Takinogawa
13	Takinogawa Daini Elem. Sch.	6-19-4 Takinogawa
14	Kita City Office Government Office for Takinogawa	2-52-10 Takinogawa
15	Takinogawa Daisan Elem. Sch.	1-12-27 Takinogawa
16	Nishigahara Elem. Sch.	4-19-21 Nishigahara
17	Asuka Junior High Sch.	3-5-12 Nishigahara
18	Takinogawa Elem. Sch.	1-18-10 Nishigahara
19	Former Tabata J.H. Sch.	6-9-1 Tabata
20	Tabata Elem. School	5-4-1 Tabata

[Semi-complementary welfare evacuation shelter]

No.	Facility name	Location
1	Inatsuke J.H. School	6-1-4 Akabane-nishi
2	Jujo Fujimi J.H. Sch.	1-9-33 Jujodai
3	Takinogawa Koyo J.H. Sch.	5-55-8 Takinogawa
4	Tabata J.H. School	4-17-1 Tabata

As of April 1, 2025

